

SCHEDULE

120th ANNUAL

Badsey Flower Show

TO BE HELD ON
Saturday 29th July 2023

at

Badsey Recreation Ground, Sands Lane

The Ground will be opened at 13.00.

Admission £4

Children £1

FREE CAR PARKING

Cover design by
Amie Cameron

Don't Forget: Entry Night

6pm to 9pm on Tuesday 25th July 2023 at Badsey First School

**Entry forms available from (and accepted at) entries box situated inside
The Spar, High Street, Badsey.**

Please bring any tombola donations to Entry Night

PLEASE TAKE EXTRA ENTRY FORMS



Round Of Gras, Bretforton Road, Badsey, Evesham. WR11 7XQ

Telephone: 01386 830206



Uniquely called The Round of Gras since 1968 and the original home of the famous Asparagus auction, we take our Gras routes very seriously!

Not only do we offer an extensive Asparagus food menu but you'll also find evidence of Gras all around the pub. We pride ourselves in our collection, from cutters tools from days gone by to intricate iron work woven into the fabric of the pub.

We hope you savour the experience as much as the food.

Food Service Times: 11.45am till 8pm. Sundays 12pm till 6pm

Gluten Free and Vegan Menu Now Available and Daily Specials Board Available.

Probably the best carvery in town

CARVERY AVAILABLE WEDNESDAY 12-2PM AND 5.30-8PM AND SUNDAY 12-6PM

Sunday small £6.95,
medium £9.95, large £12.95

Afternoon Tea Hampers Now Available

Made specially to order for birthdays, anniversary's and all other occasions.



Badsey Flower Show 2023 Committee

Chairman – Gordon Boon

Vice Chairman - Rosemary Smith

Hon. Treasurer – Elizabeth Stewart

Minutes Secretary - Shirley Tutton

Helpers Co-ordinator - Theresa Holt

Stalls Co-ordinator - Shirley Tutton

Publicity Officer - Louise Knight

Members

Gary Bailey, Steve Entwistle, Stephanie Roff,
Judith Sandham, Alan Stewart, Neil Thould, Lucy Bird, Carolyn Worth

Dear Entrant,

We are back with a very special Badsey Flower Show this year, as we are delighted to be celebrating the 120th Show.

It's been 135 years since the first Show and the Committee take great pleasure in bringing you this Schedule.

Whatever your age it is hoped that you will find something that captures your interest. Whether preparations have taken weeks or just days to complete, all exhibits are welcome to help make the marquee the interesting and exciting venue of the day.

Maureen Spinks from the Badsey Society is writing a book, titled 'A History of the Badsey Flower Show'. Details can be found on the Society website and on our Facebook page.

On behalf of the 2023 committee, I wish you an enjoyable afternoon and look forward to seeing you all on Show Day.

Gordon Boon

BFS Chairman

Website: www.badseyflowershow.co.uk

Facebook: www.facebook.com/Badseyflowershow

RULES FOR EXHIBITORS

1. All Classes and Divisions are open to all with the exception of Division F, which is open only to those living within the Parish of Badsey and Aldington.
2. All exhibits must be the property of the Exhibitor and must have been produced by him/her on his/her own ground or have been in his/her possession for at least three months, except where otherwise required. Any breach of this Rule, proved to the satisfaction of the Committee, will disqualify the Exhibitor from competing at any further Show and any prizes awarded will be withheld. The Committee, having reason to believe that this Rule has been disregarded in the past, reserve to themselves the right to inspect the gardens of Exhibitors either before or after the Show. The Committee also reserve the right to refuse any entries. In case of dispute, any prize awarded will be withheld until the Committee has settled the matter.
3. The Committee will sit to receive entry slips and appropriate fees at: **BADSEY FIRST SCHOOL** from 6pm to 9pm on **TUESDAY 25th JULY 2023**. **No entry will be accepted after this date.** Entry slips, with the appropriate fee, may also be left in the 'Entries Box' in the Spar Shop, High Street, Badsey on, or before 5pm on July 25th. Entries may also be submitted online at **www.badseyflowershow.co.uk** **before 5pm on 23rd July**. The fee will then be collected on the morning of the show.
4. No Exhibitor shall take more than one prize in any one Class. If more than one exhibit is shown in any one Class, further entrance fees must be paid.
5. Prizes may be withheld at the discretion of the Judges.
6. Exhibitors should bring their exhibits on the morning of the Show and must provide plates, stands or holders for their flowers, fruit or vegetables. Exhibits will be received only between 8am and 10.30 a.m. All vegetables must be exhibited in a clean state. Exhibitors, before leaving the tent, should see that their exhibits are properly labelled and numbered.

ALL EXHIBITORS MUST LEAVE THE MARQUEE BY 10.45 a.m.
A WARNING-BELL WILL BE RUNG AT 10.30 a.m.
7. The Marquee will open at 2.00 p.m. and close at 5.00 p.m.

**NOTHING EXHIBITED SHALL BE REMOVED FROM THE
MARQUEE BETWEEN THESE TIMES.**
8. A free admission ticket to this year's Show will be given to all Exhibitors who pay £5.00 or more in entry fees.
9. The award of the Judges will be final. The Committee cannot alter the Judges' decision, except for a breach of Rule 2.
10. Whilst every care will be taken to protect the property of the Exhibitors, the Committee cannot be held responsible for any loss or damage.

THESE RULES WILL BE STRICTLY ENFORCED

BADSEY FLOWER SHOW

SHOW SCHEDULE 2023

DIVISION A

Entry fee: 20p per class

Note: The Rose Society UK rules and regulations are in use.

Flowers and Pot Plants

Class Rose Section

- 1 Three Rose Buds, one variety or mixed
- 2 One Vase, Bush Large Flowered, 3 Blooms, one variety
- 3 One Vase, Bush Large Flowered, one Specimen Bloom
- 4 One Vase, Rambler or Climbing, not more than 3 Sprays, one variety or mixed
- 5 One Vase, Bush Cluster Flowered, 3 Stems, one variety or mixed
- 6 One vase miniature roses three stems
- 7 Most scented Rose

Class Sweet Pea Section

- 8 A Bowl to be judged for quality, and all-round decorative effect, any natural foliage or grasses may be used
- 9 One Vase, 9 Stems, Distinct
- 10 One Vase, 9 Stems, Mixed

Class Pot Plant Selection

- 11 One Planted Patio Pot, pot diameter not to exceed 12 inches (30cm)
- 12 One Plant in Flower, pot diameter not to exceed 10½ inches (27cm)
- 13 One Plant Foliage, pot diameter not to exceed 10½ inches (27cm)
- 14 One Fuchsia in Flower, pot-grown, pot diameter not to exceed 10½ inches (27cm)
- 15 One Orchid, pot-grown, pot diameter not to exceed 10½ inches (27cm)
- 16 One Begonia in Flower, pot grown, pot diameter not to exceed 10½ inches (27cm)

Flowers and Pot Plants continued

Class Pot Plant Section Continued

- 17 One Cactus, pot diameter not to exceed 9 inches (23cm)
- 18 One Succulent, pot diameter not to exceed 9 inches (23cm)

Class Cut Flower Section

- 19 Three Vases, Cut Flowers, outdoor grown, one kind per vase
- 20 Two Vases, Annuals, one kind per vase
- 21 A Single Flower Button-Hole, own foliage
- 22 One Vase, Garden Flowers, to face all-round
- 23 Highest Number of Flower Varieties in a bowl / vase
- 24 Three Blooms, floating in a bowl of shallow water - any variety of blooms - any shape of bowl
- 25 One Vase, shrub, five stalks
- 26 A nosegay / posy surrounded by a doily, not more than 15cm across
- 27 5 Hosta leaves displayed in a container

DIVISION B

Entry fee 20p per class

The exhibitor must be 65, or over, at the date of the Show. The exhibitor's age must be shown on the Entry Form. All foodstuffs must be covered by clear plastic. All flowers, fruit or vegetables used, need not have been grown by the entrant **unless specified**. Unless otherwise specified, exhibits in all Classes must be made and arranged by the **entrant only**.

Class Seniors

- 31 One Plant in Flower, pot diameter not to exceed 10½ inches (27cm)
- 32 A Cake, any variety, any size
- 33 Handicraft - One Item, free choice, any medium
- 34 One photograph, unmounted and unframed, taken by the entrant of *New Beginnings*—maximum size 5 x 7 in (13cm x 18cm)

DIVISION C

Entry fee 20p per class

Please note: For this section, the flowers do not need to have been grown by the exhibitor. Designs should be exhibited in an area 56cm wide and deep, and at an unlimited height. You do not have to fill the space.

Rules for Floral Art (and reasons for disqualification of entries):

1. Failure to comply with any specific requirements for a class as stated in the show schedule i.e. measurements of components.
2. Fresh plant material that does not have cut ends of stems in water or water retaining material except strong fibrous P.M.
3. Inclusion of artificial plant material (**UNLESS SPECIFIED IN THE SCHEDULE**)
For any disqualifications, the exhibit will be marked 'not according to schedule'

Class	Floral Art
41	A line arrangement using only five flowers and foliage, leaves and grasses
42	A basket arrangement using flowers and foliage from your garden, for a <i>Summer Garden Party</i> presentation
43	A foliage-only arrangement table centre, using no floral foam
44	A floral gift for my teacher in a mug (children aged 10 and under)

DIVISION D

Entry fee 20p per class

Class	Vegetables
51	A Collection of Four different kinds of Vegetables in a box or basket
52	Nine Pods of Peas
53	Nine Pods of Dwarf French Beans
54	Seven Cherry Tomatoes, on a paper plate
55	Five Pods of Runner Beans
56	The Longest Runner Bean
57	Five Pods of Broad Beans
58	Five Potatoes, of any variety, to be named

Class Vegetables Continued

- 60 Five Onions, dressed, tops not to exceed 3 ins. (76mm)
- 61 Five Beets, Round, tops to be trimmed to 3 ins. (76mm)
- 62 Five Carrots, Long or Stump Rooted, tops to be trimmed to 3 ins. (76mm)
- 63 Three Courgettes
- 64 Five Tomatoes
- 65 One Vegetable Marrow, fit for the table
- 66 One Dwarf Cucumber
- 67 One Standard Cucumber, frame or glasshouse
- 68 One Bunch of Salad Onions, bunch not less than 3ozs (85gms)
- 69 Nine Shallots, dressed, tops not to exceed 1 inch (25mm)
- 70 A Collection of bunched, Fresh Herbs
- 71 One Pot of single variety Herb, home grown, pot not to exceed 8 ins. (20cm) in diameter
- 72 One Dish of any other Vegetable - not specified above
- 73 Novelty Item - The Funniest Vegetable

DIVISION E

Entry fee 20p per class

Class Fruit

- 81 Collection of Fruit on a Plate, three different types of fruit on a plate
- 82 One dish of Raspberries
- 83 One dish of Gooseberries
- 84 One dish of any other Fruit
- 85 Three sticks of Rhubarb, top trimmed

DIVISION F

Entry fee 20p.Per class

Note: As all the Classes in this section are judged in-situ, they are open to the residents living within the Parish of Badsey and Aldington only.

Class	Gardens
91	Most Attractive Garden - large or small – must be visible from the road or public footpath, contributing to the appearance of the Village
92	Hanging Basket - judged at your home – must be visible from the road, contributing to the appearance of the Village
93	Garden Tub (Any planted container) - judged at your home - must be visible from the road, contributing to the appearance of the Village
94	Best Decorated Bicycle— judged at your home – must be visible from the road, contributing to the appearance of the Village
95	Best Decorated Wheelbarrow— judged at your home – must be visible from the road, contributing to the appearance of the Village
96	Best Allotment at Pear Tree Fields

DIVISION G

No Entry fee

All entrants in this division must be within the ages specified at the date of the Show. All entries in these Classes must be made and arranged by **one person**, and **only by the entrant**. The age of the entrant must be shown on the Entry Form.

All food stuffs are to be covered with clear plastic and any signature or means of identification must be effectively covered.

Any flower, plant, fruit or vegetable used, need not be grown by the entrant.

Class	Children Under 5 years of Age
101	Picture made from pasta - not exceeding A3 sized paper - 12 ins. x 17 ins. (30 cm x 42 cm).
102	A picture, in any medium—not exceeding A3 sized paper - 12 ins. x 17 ins. (30 cm x 42 cm), of your favourite book character—tracing excluded
103	Design a picture on a paper plate
104	A collage of plants or flowers, not exceeding A3 size - 12ins x 17 ins. (30cm x 42cm).
105	A model of a “mini beast” made from clay or other modelling material
106	Novelty animal, made from any type of vegetables or fruits

Class Children 5, 6 & 7 Years

- 107 A picture in any medium, not exceeding A3 size - 12 ins. x 17 ins. (30 cm x 42 cm), of your favourite book character—tracing excluded
- 108 A collage of plants or flowers, not exceeding A3 size - 12ins x 17 ins. (30cm x 42cm).
- 109 A picture frame, not exceeding A4 size, decorated in any medium
- 110 Design a bookmark
- 111 A bird scarer
- 112 A decorated or painted egg
- 113 Decorate a Plant Pot, maximum size, 6 inches (15cm)
- 114 Novelty animal made from any material
- 115 Bling up your Teddy Bear, maximum size, 12 inches (30cm)
- 116 A floral decoration in an egg cup
- 117 One photograph, unmounted and unframed, taken by the entrant of "Summer", maximum size 5 inches x 7 inches (13cm x 18cm)
- 118 Write (in handwriting) a bed-time story. To be written on one side of A4 sheet (Maximum) in a plastic sleeve. Entries to be submitted on Show day, and no name should be written on your entry – a number will be given

Class Children 8, 9, 10 & 11 Years

- 119 A picture in any medium, not exceeding A3 size - 12 ins. x 17 ins. (30 cm x 42 cm), of your favourite book character- tracing excluded
- 120 A collage of plants or flowers, not exceeding A3 size - 12ins x 17 ins (30cm x 42cm).
- 121 Decorated Pebble / Stone
- 122 Design a bookmark
- 123 A decorated or painted egg
- 124 Nine homemade sweets on a paper plate
- 125 Five decorated homemade fairy cakes on a paper plate
- 126 Five flapjacks on a paper plate

Class Children 8, 9, 10 & 11 Years Continued

- 127 Handicraft - Decorative collage greeting card
- 128 Handicraft - Soft Toy, one item, free choice
- 129 Handicraft—Sewn, one item, free choice
- 130 Handicraft - Models, one item, free choice, kit form, maximum size 24 inches x 24 inches (61cm x 61cm)
- 131 One photograph, unmounted and unframed, taken by the entrant of *Bicycle*, maximum size 5 inches x 7 inches (13cm x 18cm)
- 132 Design a cover for the Schedule for Badsey Flower Show, not exceeding A4 size
- 133 Write (in handwriting) Poem on the subject: *My Coronation Celebration*. To be written on one side of A4 sheet (maximum) in a plastic sleeve. Entries to be submitted on Show day and no name should be written on your entry – a number will be given

Class Young People 12, 13, 14 & 15 Years

- 134 Handicraft - Models, one item, free choice, kit form, maximum size 24 inches x 24 inches (61cm x 61cm)
- 135 One photograph, unmounted and unframed, taken by the entrant of *Colour*, maximum size 5 inches x 7 inches (13cm x 18cm)
- 136 Design a picture, in any medium, of your favourite book character
- 137 Five Chocolate Brownies
- 138 Design your own Emoji
- 139 Five decorated homemade fairy cakes on a paper plate

Can you help at the Badsey Flower Show?

We always need as many volunteers as possible, without whom the Show could not run. On the Friday, help is needed to set out the tables in the marquee, and to start to get the field ready. On Show Day, we need help to move tables and to generally help get the field, car park and marquee ready. During the Show we always need help with marshalling, car parking, selling raffle tickets, working on the gates, helping on the tombola and all the tasks that need to be undertaken to make the day a success. We also need help to clear away at the end and return the field to its pristine condition.

If you would like to help in any way, please contact us at: info@badseyflowershow.co.uk



FEED YOUR DOG AS NATURE INTENDED

UNCOOKED, UNCOMPROMISED



FIND ME IN THE FREEZER

- 
BALANCED TEMPERAMENT
- 
LEAN BODY MASS
- 
HEALTHY SKIN & COAT
- 
BETTER ORAL HYGIENE
- 
ENHANCED DIGESTION
- 
STRONG BONES & JOINTS

COTSWOLDRAW.COM

#COTSWOLDRAW @COTSWOLDRAW /COTSWOLDRAW COTSWOLDRAW



Companion Dog Show

Saturday 29th July 2023



Supported by and held at "Badsey Flower Show"
Recreation Ground, Sands Lane, Badsey. WR11 7EZ
Entries: from 1.00pm and Judging starts from 1.30 pm
(Entries open throughout Show)



Judges: Sindie Sinclair Reserve Judges: Carolyn

1. Best Veteran (7 years +)
2. Best Puppy (Dog/Bitch) from 8 weeks to 18 months old
3. Best Rescue Dog (Dog/Bitch)
4. Best Cross Breed (Dog/Bitch)
5. Child Handler (Dog/Bitch)
6. Prettiest Bitch
7. Handsome Dog
8. Most Appealing Eyes (Dog/Bitch)
9. Dog or bitch in the best condition
10. Any dog or bitch the judge would most like to take home

£2.00 entry per class, Rosettes to 6th Place
For details please call Sindie 07932748688



Scarecrow Competition Class 214

These competitions have proved to be very popular in villages across the country and, as well as brightening up the area for a short while, they make people smile. The topic for this year is *Sport*, and you should place your scarecrow in your garden from Wednesday 19th July. Judging will take place during the week before the Flower Show. Please then leave your Scarecrow for everyone to see until Sunday 30th July.

DIVISION H

Entry fee 20p per class

All entries in these classes must be made and arranged by **one person only**.

All food stuffs must be covered by clear plastic film. The entrant need not grow any fruit or vegetable used. Exhibits in these Classes must be made and arranged **only by the entrant**.

All preserves should be clearly labelled with date when made.

Class	Domestic
141	A celebration cake. To take a footprint of no more than 18ins (46cm) square—height not restricted
142	One Loaf of Home-Made Bread - not machine made
143	Dessert using a seasonal fruit, portion for one
144	Five Decorated Cupcakes
145	Five Seasonal Decorated Homemade Biscuits
146	A Quiche, maximum 7 inches (18cm) diameter
147	Five Fruit Scones
148	One Plate of Shortbread Biscuits, maximum 9 inches (23cm) across, scored into 8 sections
149	Five Meringues
150	Five Home-Made Flap Jacks, any variety.
151	Lemon Drizzle Cake
152	Victoria Sponge Cake—Jam Filled with Caster Sugar finish, Round, approximately 7 inches (18cm) across
153	Fruit Cake, to be baked in a 6 inch (16cm) Round tin (Recipe for this Fruit Cake is below)

Recipe – Creaming Method

6 oz (170g) Self Raising Flour – 6oz (170g) Mixed Fruit – Milk/Water

4 oz (113g) Caster Sugar – 4oz (113g) Margarine – 2 Eggs

Baking recommended at Gas Reg 4 or Elec. 350F/180C for approx 1 hour

Class	Domestic Continued
154	Five Ginger Biscuits
155	Five Chocolate Brownies
156	A Carrot cake, square or rectangular, presented out of tin
157	Grandma's Basket - To contain three small cakes, a small jar of jam, jelly or marmalade and a posy of garden flowers
158	A plain, clear Jar of Jelly, top sealed with wax disc and cellophane cover
159	A plain, clear Jar of Jam, Stone Fruit, top sealed with wax disc and cellophane cover
160	A plain, clear Jar of Jam, Soft Fruit, top sealed with wax disc and cellophane cover
161	A plain, clear Jar of Marmalade, top sealed with wax disc and cellophane cover
162	A plain, clear Jar of Lemon Curd, top sealed with wax disc and cellophane cover
163	A plain, clear Jar of Chutney (minimum 2 months old), any variety, top sealed with a non-metallic cover
164	Men only Entrants. Chocolate Cake 7ins (18cm) with Filling
165	A Banana Loaf—to be baked in an oblong tin, presented out of the tin
166	6 eggs most attractively displayed on the theme <i>Eggs in a Hat</i>
167	A plate of three identical brown eggs
168	A plate of three eggs of any colour—could be brown white or blue
169	A plate of three identical bantam eggs
170	A single egg judged on contents—Whole egg is presented then cracked by the judge
171	A plain, clear Jar of Light Honey, top sealed with wax disc and cellophane cover
172	A plain, clear Jar of Dark Honey, top sealed with wax disc and cellophane cover
173	A plain, clear Jar of Set Cloudy Honey, top sealed with wax disc and cellophane cover

All entries must be made and arranged by **one person only**.

Any signature, or other means of identification, must be effectively covered.

Class	Handicrafts and Arts
181	Handicraft - Knitting - 1 item - hand-knitted garment
182	Handicraft - Dressmaking – 1 item - Free choice
183	Handicraft - Cushion - 1 item - Any Medium - Free choice
184	Handicraft - Soft Toy - 1 item - Free choice
185	Handicraft - Embroidery - 1 item - Free choice
186	Handicraft - Cross-Stitch - 1 item - Free choice
187	Handicraft - Tapestry / Canvas-Work - 1 item - Free choice
188	Handicraft - Patchwork / Quilting - 1 item – Free choice
189	Handicraft - Crochet - 1 item - free choice
190	Handicraft - Fibre Arts - 1 item, hand-spun yarn from any fibre (wool, alpaca etc.—natural or dyed), yet to be used in any project
191	Hand-painted Pebble - maximum dimension no larger than 6 inches (15cm)
192	Picture – Painting or Drawing, any medium (Note: any signature to be effectively covered)
193	Handicraft – Decorative Greeting Card —1 item—any medium
194	Handicraft—Models —1 item, any medium

Class	Photography (must be unframed + unmounted, and taken by the entrant)
201	Building , Maximum size: 5 ins. x 7 ins. (13cm x 18cm)
202	Food , Maximum size: 5 ins. x 7 ins. (13cm x 18cm)
203	Clouds , Maximum size: 5 ins. x 7 ins. (13cm x 18cm)
204	Off the Wall , Maximum size: 5 ins. x 7 ins. (13cm x 18cm)
205	Frost , Maximum size: 5 ins. x 7 ins. (13cm x 18cm)
206	Water , Maximum size: 5 ins. x 7 ins. (13cm x 18cm)

Class Literature

211 Literature - Write a prose or poem maximum 300 words entitled *Memories of Badsey Flower Show*. Entries to be written on one side of A4 paper in a plastic sleeve. Entries to be submitted on Show day. No name to be written on your entry – a number will be given.

Class Creative Class

212 A Garden Ornament made from re-cycled materials

213 A Crazy Creation e.g. Onion attached to a spring becomes a Spring Onion.

214 A Scarecrow or group of Scarecrows depicting the topic of *Sport*. Your Scarecrow must be visible from the road

215 A photograph or picture for the Village Christmas Card

Photography Classes for 2024

To give everyone the opportunity to take their best photographs, we have decided to publish the details for next year's competition. These titles are chosen to be deliberately abstract and should act as an inspiration for your photography. Good luck!

Division B: Seniors (Class 34)

One Photograph, un-mounted and unframed, taken by the entrant of *Good Times*, maximum size 5 inches x 7 inches (13cm x 18cm)

Division G: Children

5-7 years (Class 114)

One photograph un-mounted and unframed, taken by the entrant of *Selfie of My Day Out*, maximum size 5 inches x 7 inches (13cm x 18cm)

8-11 years (Class 129)

One photograph, un-mounted and unframed, taken by the entrant of *Selfie of My Day Out*, maximum size 5 inches x 7 inches (13cm x 18cm)

12-15 years (Class 134)

One photograph, un-mounted and unframed, taken by the entrant of *Selfie of My Day Out*, maximum size 5 inches x 7 inches (13cm x 18cm)

Division I: General Photography (Classes 201 to 206)

Photographs, un-mounted and unframed, taken by the entrant, maximum size 5 inches x 7 inches (13cm x 18cm) on the topics of:

**Companionship
Heroes**

**Coronation
Community**

**Holidays
Pets**

Cups and Trophies

SIR JULIUS SLADDEN CHALLENGE CUP

Presented by Sir Julius Sladden, to the exhibitor with most points in **Divisions A, C, D & E** (Flowers, Floral Art, Vegetables and Fruit)

A.C. SPARROW MEMORIAL CUP

Presented by Messrs. F. C. and A. W. Sparrow, to the exhibitor with the most points in **Division A** (Flowers and Pot Plants)

PATRICK SPARROW MEMORAL CUP

Presented by the family of Patrick Sparrow, to the best exhibit in **Division A** (Flowers & Pot Plants)

EDGAR OLIVER CUP

Presented by Edgar Oliver's family, to the exhibitor with the most points in **Classes 1-10 inclusive** (Roses and Sweet Pea Sections)

IAN SIMMONDS TROPHY

Presented by Sue Simmonds, to the winner of **Class 91** (Most Attractive Garden)

G. H. STEWART CUP

Presented by Mr G. H. Stewart, to the exhibitor with the most points in **Division C** (Floral Art)

MARY LESTER MEMORIAL CUP

Presented by Mrs. H. Stewart, to the best exhibit in **Division C** (Floral Art)

C. A. BINYON CUP

Presented by Mr. C. A. Binyon and the Society, to the exhibitor with the most points in **Division D** (Vegetables)

E. M. NORTON TROPHY

Presented by Mr. S. J. Norton, to the exhibitor with the most points in **Division E** (Fruit)

A. J. BRAZIER CUP

Presented by A. J. Brazier, to the exhibitor with the most points in **Classes 101-106** (Children under 5)

TED WHEATLEY CUP

Presented by Peggy Wheatley, to the exhibitor with the most points in **Classes 107-118** (Children 5-7 years)

TONY FOWLER CUP

Awarded to the exhibitor with the most points in **Classes 119 to 133** (Children 8-11 years)

T CUP

Presented by the Boon Family, to the exhibitor with the most points in **Classes 134-139** (Young People 12-15 years)

RON JONES CUP

Presented by R. V. Jones, to the exhibitor with the best overall exhibit in **Classes 92 & 93** (Hanging Basket and Garden Tubs)

WINNIE JONES MEMORIAL CUP

Presented by R. V. Jones, to the exhibitor with the most points in **Division B** (Senior Section)

HENRY KING CHALLENGE CUP

Presented by H. W. King, to the exhibitor with the **most entries in the Show.**

THE ORIGINAL G H STEWART CUP

Re-presented by the family of Mr. R. V. Jones, to the exhibitor with the most points in **Division H** (Domestic)

SEWARD HOUSE TROPHY

Presented by Seward House Nursing Home, to the exhibitor with the most points in **Classes 181-190** (Handicraft)

W.HATCH & P.SANDFORD CHALLENGE CUP

Presented by their families, to the exhibitor with the most points in **Classes 201-206** (Photography)

WILL DALLIMORE LITERATURE COMPETITION CUP

Presented by Will Dallimore, to the winner of **Class 211** (Literature)

ELLEN EXON CUP

Presented by Sid Norton, to the most points of **Classes 212 & 213** (Creative)

CARRIE JOHN CUP

Presented by the family of Carrie John, to the exhibitor with the most points in **Classes 191-194** (Handicraft)

THE LIZZIE and RICHARD CUP

Presented by Lizzie Noyes in memory of Richard Phillips, to the winner of **Class 135** (Photography—Young People 12-15 years)

THE BADSEY & ALDINGTON PARISH TROPHY

Presented by Badsey & Aldington Parish Council, for community involvement by the winner of **Class 214** (Scarecrow)

THE EGG CUP

Presented by Huw Evans, for the most points in **Classes 166-170** (Eggs)

JASON MEDCROFT MEMORIAL CUP

Presented by the Badsey Flower Show, to the exhibitor with the most points in **Classes 91-95** (Gardens)

POINTS AWARDED – for each Cup/Trophy, shall be

**FIRST PRIZE = 3 points | SECOND PRIZE = 2 points | THIRD PRIZE = 1 point
CLASSES– 51 & 81: FIRST = 6 points | SECOND = 4 points | THIRD = 2 points**



The Dance Studio
Chapel Street
Badsey
WR11 7HA

CG Dance Club provides dance classes and private lessons for all ages in ballroom and Latin dances. From complete beginners to the more advanced.



01386 834 441

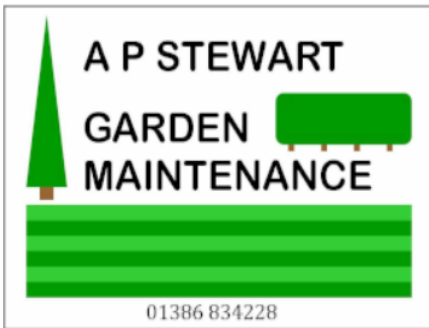
07957 530964



Based in Evesham, Worcestershire, Avon Scaffolding provides safe, reliable, fast and competitively priced expert services for the domestic, commercial and industrial markets. Our team guarantees a high quality standard of work and complete customer satisfaction, no matter how big or small the job.



Based in the Vale of Evesham in Worcestershire, Buzz Electrical has been providing electrical services and installations throughout the Midlands, Cotswolds and further afield for over 18 years.



Professional and Friendly Service for all your Garden Maintenance needs.

BHGS
 SUPPLYING YOUR GROWING NEEDS

Supplying Professional & Amateur Growers

Horticultural Supplies & Floral Sundries

Horticulture
 Compost & Fertiliser
 Planters, pots & Trays
 Fleece & Polythene
 Pest Control
 Seed & Bulbs
 Irrigation
 Tools & Equipment
 Bird Food
 Clothing & Footwear
 Garden Furniture
 Helpful & Knowledgeable Staff

SilverBirch@bhgs
 Fresh & Faux Flowers
 Fresh Flower Bouquets
 Wedding Arrangements
 & Funeral Tributes
 Fresh or Artificial
 Hire Equipment
 Floral Foam
 Glassware & Homeware
 Candles, Ribbon

Visit us at Vale Park, Evesham, Worcs, WR11 1GP

Opening Hours

Monday - Friday: 8am - 5pm, Saturday: 8.30am - 12noon

Contact Us

Email: sales@bhgs Ltd.co.uk Tel: 01386 444100

Web: www.bhgs Ltd.co.uk

BADSEY COMMUNITY SPORTS CLUB

Opening Hours:
 Mon - Tues closed
 Weds - Thurs from 7pm
 Fri from 6pm
 Sat - Sun from 12pm
01386 830867

Your not-for-profit local village pub, sports club and event space, with a skittle alley, function room & lounge.

Hire available for:

- Weddings
- Christenings
- Birthdays
- Wakes
- Etc.

POP IN TO YOUR LOCAL

Outdoor facilities / activities:

- Archery
- Children's play area
- Football pitches
- Floodlit training pitch

sky sports

BT SPORT

Previous Badsey Flower Shows...



GLO ELECTRICS

Your local Evesham electrician

Contact us for all electrical work, including:

- Internal & External Light Fitting
- Car Charge Equipment EVSE
- Landlord Certificates EICRS
- Garden Building Electrics
- External Sockets
- PAT Testing
- Rewires + Fuseboard Upgrades



07510 123438

www.gloelectrics.co.uk



DOVE TAIL JOINERY

YOU DREAM WE CRAFT

Over 30 years of expertise

We are a family owned joinery company based in Pershore. We can make windows, doors, cupboards & storage, garage doors, gates; if it involves wood - look no further.

Get in touch for a free no obligation quote, we'd love to help craft your dream!



01386 861123



www.dovetailjoinery.ltd



The Wheatsheaf Inn



The Inn sits at the centre of the village of Badsey, in the Vale of Evesham, famous for its crops and market gardening. Dating back to the 17th Century the beautiful historic building which was once a farm and a bakery and now offers a Pub and Restaurant with a Function Room for private parties and business meetings. We also offer Bed and Breakfast accommodation.



Opening Hours

Monday to Thursday
4.30pm - 11.00pm

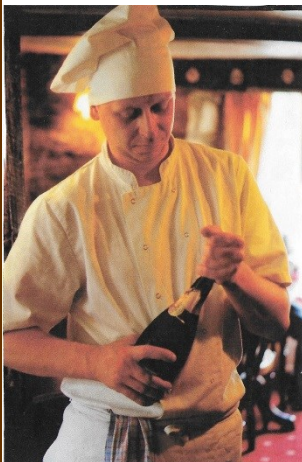
Friday, Saturday, Sunday
11.30am - 11.00pm

Our welcoming bar is a traditional English Bar with Open Beamed Ceilings. Catering for those not wishing to dine, we have a good selection of real ales including Draught Guinness, and Guest Ales, Ciders and Lagers as well as regularly changing local guest ales and all the normal spirits and good wines.

High Street, Badsey, Evesham, Worcs WR11 7EJ

Telephone: 01386 830380

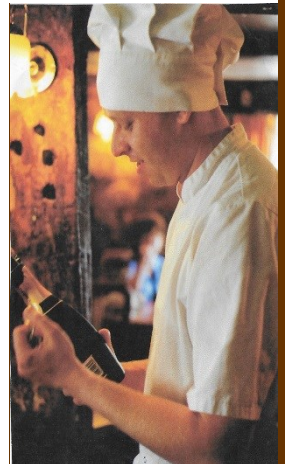
Walters at the Wheatsheaf



Walter's at the Wheatsheaf is the new restaurant run by chef Peter Zemla in the Wheatsheaf Inn, Badsey. We pride ourselves on home cooked food made with local produce wherever possible.

There is a full and exciting menu that is frequently updated, along with a Chef's traditional bar menu and a specials board.

Wednesday evenings is International Evening with a three course set menu. The theme for this evening changes each week and news can be found on Facebook and on the notice board in the restaurant.



Bookings are highly recommended directly to the Wheatsheaf Inn on 01386 830380.

SPAR



SANCO BADSEY



SPAR STORES BADSEY

Sanco Limited

George Sangha

16 HIGH STREET

BADSEY

EVESHAM

TEL: 01386 830359

YOUR LOCAL CONVENIENCE STORE

